

A	1	2	3	4	5	6	7	8	9	10	11	12	13	14	15	16	17	18	19	20	21	22	23	24	25
B	+	+	+	+	+	+	+	+	+	+	+	+	+	+	+	+	+	+	+	+	+	+	+	+	+
C	+	6	+	+	+	5	+	+	+	+	4	+	+	+	3	+	+	+	2	+	+	+	+	1	+
D	+	+	+	+	+	+	+	+	+	+	+	+	+	+	+	+	+	+	+	+	+	+	+	+	+
E	+	+	+	+	+	+	+	+	+	+	+	+	+	+	+	+	+	+	+	+	+	+	+	+	+
F	+	+	+	+	+	+	+	+	+	+	+	+	+	+	+	+	+	+	+	+	+	+	+	+	+
G	+	7	+	+	+	8	+	+	+	+	9	+	+	+	10	+	+	+	11	+	+	+	+	12	+
H	+	+	+	+	+	+	+	+	+	+	+	+	+	+	+	+	+	+	+	+	+	+	+	+	+
J	+	+	+	+	+	+	+	+	+	+	+	+	+	+	+	+	+	+	+	+	+	+	+	+	+
K	+	+	+	+	+	+	+	+	+	+	+	+	+	+	+	+	+	+	+	+	+	+	+	+	+
L	+	18	+	+	+	17	+	+	+	+	16	+	+	+	15	+	+	+	14	+	+	+	+	13	+
M	+	+	+	+	+	+	+	+	+	+	+	+	+	+	+	+	+	+	+	+	+	+	+	+	+
N	+	+	+	+	+	+	+	+	+	+	+	+	+	+	+	+	+	+	+	+	+	+	+	+	+
O	+	+	+	+	+	+	+	+	+	+	+	+	+	+	+	+	+	+	+	+	+	+	+	+	+
P	+	19	+	+	+	20	+	+	+	+	21	+	+	+	22	+	+	+	23	+	+	+	+	24	+
Q	+	+	+	+	+	+	+	+	+	+	+	+	+	+	+	+	+	+	+	+	+	+	+	+	+
R	+	+	+	+	+	+	+	+	+	+	+	+	+	+	+	+	+	+	+	+	+	+	+	+	+
S	+	+	+	+	+	+	+	+	+	+	+	+	+	+	+	+	+	+	+	+	+	+	+	+	+
T	+	30	+	+	+	29	+	+	+	+	28	+	+	+	27	+	+	+	26	+	+	+	+	25	+
U	+	+	+	+	+	+	+	+	+	+	+	+	+	+	+	+	+	+	+	+	+	+	+	+	+
V	+	+	+	+	+	+	+	+	+	+	+	+	+	+	+	+	+	+	+	+	+	+	+	+	+
W	+	+	+	+	+	+	+	+	+	+	+	+	+	+	+	+	+	+	+	+	+	+	+	+	+
X	+	31	+	+	+	32	+	+	+	+	33	+	+	+	34	+	+	+	35	+	+	+	+	36	+
Y	+	+	+	+	+	+	+	+	+	+	+	+	+	+	+	+	+	+	+	+	+	+	+	+	+
Z	+	+	+	+	+	+	+	+	+	+	+	+	+	+	+	+	+	+	+	+	+	+	+	+	+

**LEGEND**

○ = Corner having information on form 7100-52 in this file.

*Legend conforms to reporting forms MPMCC 11/79*

○' = in Adjacent TWP. file

**FILING INSTRUCTION**

File 7100-52 card record by letter and number coordinates behind the file guide for the township in which it falls.

File the 7100-52 card record by letter and then by number i.e., all A cards first, then B cards etc.

The first card behind the file guide (if data have been obtained and recorded) will be card A-1 for N.W. Township Corner, then card A-2 for 1/16 corner then card A-3 for 1/4 corner etc.

CORNER RECORD (SEARCH)

Index File No. \_\_\_\_\_

Tract or Survey No. \_\_\_\_\_

Cor. No. A-13

T 18S, R. 9E,

R.D. Bend

County Deschutes

Sec Cor

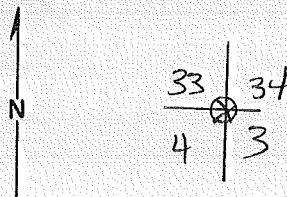
Merid. Will

N.F. Deschutes

State Oregon

CORNER DIAGRAM

DESCRIBE CORNER MONUMENT FOUND



Remonumented by  
Dave Bateman 8/96  
(David Evans)

SEE: Z-13, T17S, R9E,

DESCRIBE BEARING TREES OR OTHER OFFICIAL ACCESSORIES FOUND

PHOTO IDENTIFICATION DATA

Photo No. \_\_\_\_\_

Filed At. \_\_\_\_\_

Object Ident. \_\_\_\_\_

Ident. By \_\_\_\_\_

Signature \_\_\_\_\_

DESCRIBE CORNER LOCATION RELATIVE TO NEAR-BY FEATURES, ALSO HOW TO REACH CORNER

PLANE COORDINATE POSITION DATA

State \_\_\_\_\_ Zone \_\_\_\_\_

X \_\_\_\_\_

Y \_\_\_\_\_

Estab. By \_\_\_\_\_

Agency \_\_\_\_\_

Signature

Title

Division

Headquarters

Date

7100-52

REV. 65 5

CORNER RECORD (PERPETUATION)

MONUMENT: DESCRIBE NEW MONUMENT SET, OR WORK DONE TO PRESERVE EXISTING MONUMENT

9

ACCESSORIES DESCRIBE NEW BT'S WITNESS OBJECTS ETC. ESTABLISHED, OR WORK DONE TO PRESERVE EXISTING EVIDENCE

10

Work Done By \_\_\_\_\_ Title \_\_\_\_\_ Date \_\_\_\_\_ State Registration No. or Agency \_\_\_\_\_

Certified Cor. Record Prepared? Yes No Filed At: \_\_\_\_\_ Date \_\_\_\_\_

11

REMARKS

12

Index File No. T. R. M. Tract or Surv. No. Cor. 13

Index  
File No. 1551

CORNER RECORD (SEARCH) Contract, or

Cor. No. A-15  
2005

T 18 S. R. 9 E. R.D. Bend

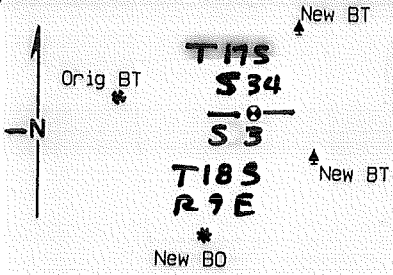
(Ref. FSM 7151.4) Survey No. Deschutes

Merid. Willamette N.F. Deschutes State Oregon

Section N/4 Cor. of 3

CORNER DIAGRAM, per legend

DESCRIBE CORNER MONUMENT FOUND



Orig. stone 17"x12"x10" marked 1/4 on N. face. (open top 4).

DESCRIBE BEARING TREES OR OTHER OFFICIAL ACCESSORIES FOUND

No evidence of SW BT in any direction, searched up to 3 chs. from cor.  
A Hemlock, 29" dia. N.70°W., 154 lks. with overgrown face and BT blaze.  
Measured to face.

PHOTO IDENTIFICATION DATA

Mapping Grade GPS  
Differentially corrected  
NAD 27 ORE S. Zone Coords.  
N = 871368  
E = 1701433  
Elev. = 6366 ft. MSL

DESCRIBE CORNER LOCATION RELATIVE TO NEAR-BY FEATURES, ALSO HOW TO REACH CORNER

CORNER LEGEND:

- |        |            |                        |
|--------|------------|------------------------|
| FS or  | Unverified |                        |
| Contr. | Other      |                        |
| ○      | ◇          | Searched For/Not Found |
| ⊗      | ⊗          | Evidence Found/Accept. |
| ●      | ◆          | Permanent Mon. Set/Fd. |

Searched By:

William B. Ham

Title

PLS

Division

CS

Headquarters

SO

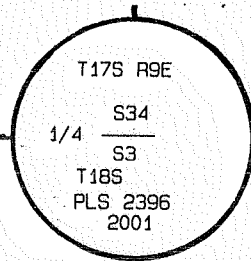
Date

9/12/01

# CORNER RECORD (PERPETUATION)

MONUMENT: DESCRIBE NEW MONUMENT SET, OR WORK DONE TO PRESERVE EXISTING MONUMENT

MONUMENT STAMPED



RVE EXISTING EVIDENCE

Set a 2 1/2" dia. x 30" long Aluminum pipe surmounted by a 2 1/2" dia. Alum. cap rising 4".  
A penny at base of pipe. Orig. stone buried on S. side. A steel fence post 3 ft. North.

- AC A Lodgepole Pine 8" dia., N.10°E., 128.5 ft., mkd. X BT.
- A Lodgepole Pine 3" dia., S.68°E., 60.4 ft., mkd. X BT.
- A Rock outcrop 4.5 ft. x 4 ft. x 3 ft. high., S.09°W., 199.1 ft. mkd. X BO.
- A Hemlock 29" dia., N.70°W., 103.9 ft. Orig. BT, not re-mkd.

- Distances measured to a 1" dia. brass washer mkd. LS 2396 nailed to the side center at the root crown.
- A location poster on bike trail 600 ft. N. of Cor. approx. 100 ft. west of stream crossing.

Work Done By: Bill Ham Title: PLS Date: 9/12/01 State Registration No. 2396  
 Certified Cor. Record Prepared?  Yes No Filed At: Des. Co. Surveyor's Office Date \_\_\_\_\_

History  
of  
Surveys,  
G.L.O.,  
etc.

GLO survey of 1882 by Samuel Lackland.  
 Record - N.89°54'W. Bet. Secs. 3 and 34, va 19° E.  
 @40.00 chs. Set wash boulder 17x12x9 ins. 10 ins. in ground for 1/4 Sec. cor.,  
 marked 1/4 on N. face, from which:  
 A B. Pine 20 ins. diam. bears S.25°W. 152 lks. dist. marked 1/4 S. BT.  
 A B. Pine 28 ins. diam. bears N.84°W. 208 lks. dist. marked 1/4 S. BT.

Index File No. 1551 T. S., R. E., W.M. Contract or Surv. No. \_\_\_\_\_ Cor. \_\_\_\_\_

**A-15 2001**

USDA-FOREST SERVICE

Index  
File No. 2551

CORNER RECORD (SEARCH)

(Ref. FSM 7.151.4)

Tract or

Survey No. \_\_\_\_\_

Cor.

No. A-25

T. 18 S. R. 9

E. R.D. BEND

County DESCHUTES

COR. of SEC. \_\_\_\_\_

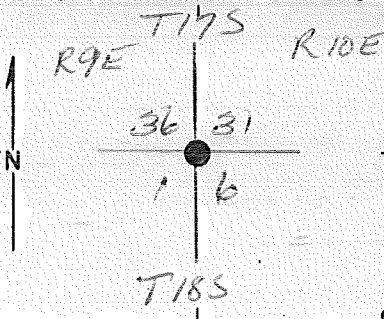
Merid. WILLAMETTE

N.F. DESCHUTES

State OREGON

COR. of SEC. \_\_\_\_\_

CORNER DIAGRAM PER LEGEND



DESCRIBE CORNER MONUMENT FOUND

SEE T185 R10E A-1

DESCRIBE BEARING TREES OR OTHER OFFICIAL ACCESSORIES FOUND

PHOTO IDENTIFICATION DATA

Photo No. \_\_\_\_\_

Filed At. \_\_\_\_\_

Object Ident. \_\_\_\_\_

Ident. By \_\_\_\_\_

*Signature*

DESCRIBE CORNER LOCATION RELATIVE TO NEAR-BY FEATURES, ALSO HOW TO REACH CORNER

Corner Legend:

Searched for/Not Found

Evidence Found/Accept.

Permanent Monument

Signature \_\_\_\_\_

Title \_\_\_\_\_

Division \_\_\_\_\_

Headquarters \_\_\_\_\_

Date

10/31/50

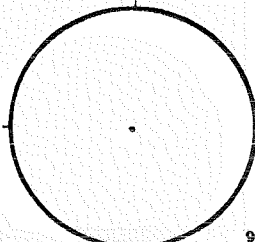
D-7100-52 (3/79)

5

CORNER RECORD (PERPETUATION)

MONUMENT DESCRIBE NEW MONUMENT SET, OR WORK DONE TO PRESERVE EXISTING MONUMENT

MONUMENT SET/REPAIRED



ACCESSORIES DESCRIBE NEW B<sup>1</sup>'s WITNESS OBJECTS ETC. ESTABLISHED, OR WORK DONE TO PRESERVE EXISTING EVIDENCE

Work Done By PLAT PREPARED OR Title \_\_\_\_\_ Date \_\_\_\_\_ State Registration No. \_\_\_\_\_  
Certified Cor. Record Prepared? Yes  No  Filed At: Co. SURVEYOR'S OFFICE Date \_\_\_\_\_

REMARKS

Index File No. \_\_\_\_\_ T. \_\_\_\_\_ S., R. \_\_\_\_\_ E., W. M. \_\_\_\_\_ Tract or Surv. No. \_\_\_\_\_ Cor. \_\_\_\_\_

A-25

Index  
File No. 18 S. R. 9 E. R.D. BEND County DESCHUTES Tract or Survey No. E-25  
 Merid. WILLAMETTE N.F. DESCHUTES State OREGON SE Cor. Sec. 1  
NW Cor. Sec. 7

SEE: E-1 T18S R10E

EV. ID  
BC Set 1980  
by R.E.O.



E-25

Index  
File No. 18 S. R. 9 E. R.D. BEND County DESCHUTES Tract or Survey No. E-25  
 Merid. WILLAMETTE N.F. DESCHUTES State OREGON SE Cor. Sec. 1  
 NW Cor. Sec. 7

SEE: E-1 T18S R10E

EV. FD  
 Dec Set 1980  
 by R.E.O.

Index

File No.

CORNER RECORD (SEARCH)

(Ref. FSM 7151.4)

Tract or  
Survey No.

Cor.  
No.

G-25

18 S. R. 0 E. R.D.

BEND

County

DESCHUTES

E/4 Cor.

Sec. 12

Merid. WILLAMETTE N.F.

DESCHUTES

State

OREGON

W/4 Cor.

Sec. 7

SEE: G-1 T18S R10E

EV. FD 1980  
By R.E.O.